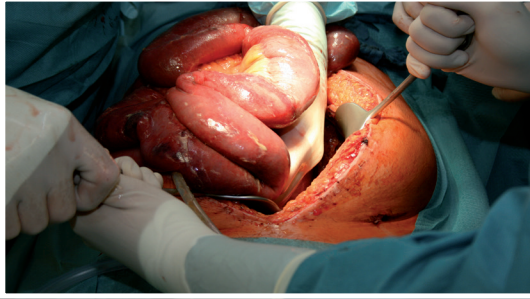
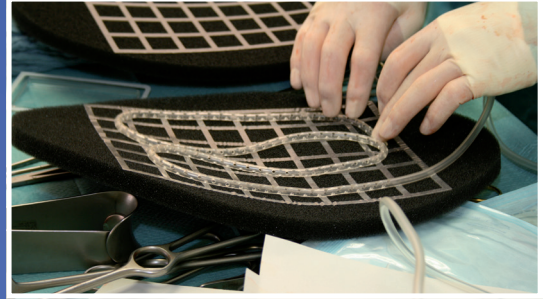


PLV ProVac Abdomen

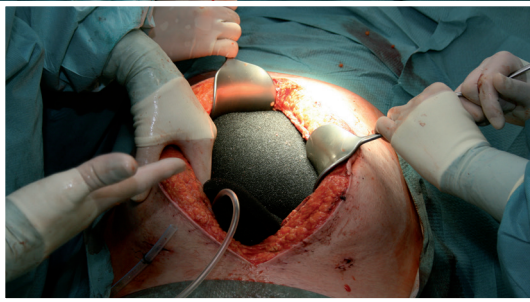
Application:



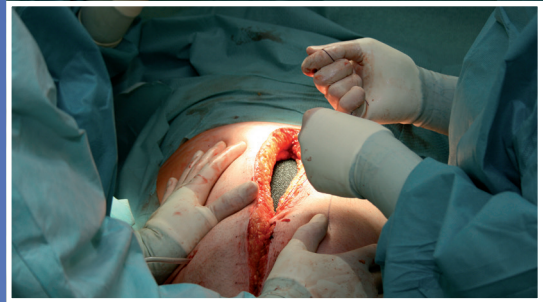
1. Cleaning of the abdominal cavity (lavage)



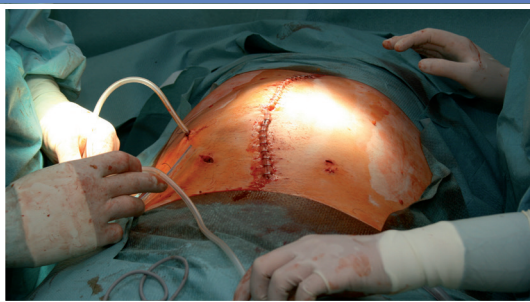
2. Adaptation of wound foams to suit findings, removal of protective films and positioning of drains on adhesive meshes.



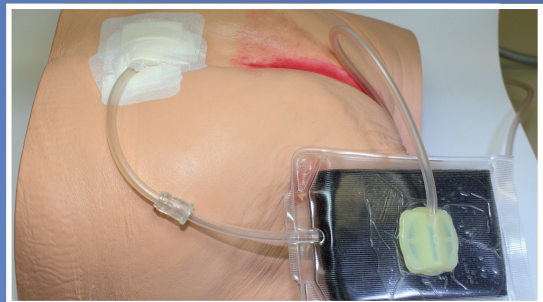
3. Application of intestinal protective film and positioning of folded wound foams in abdominal cavity. Lateral routing out of drain with help of trocar.



4. In contrast to "traditional" vacuum therapy, the fascia and skin of the abdominal wall are now closed over the foam.



5. Closed abdominal wall with laterally routed out drain. Closed tight with foil, hydrocolloid or foam dressings. Removal of trocar from drain.



6. Connection of drain to PLV universal adapter, opening of front side of universal adapter for connection of suction connector and then activation of vacuum.

Further treatment: The closed vacuum therapy system should be replaced after 3-4 days. Depending on the findings in the abdominal cavity, the treatment can be continued with fresh foam or the wound closed without foam.